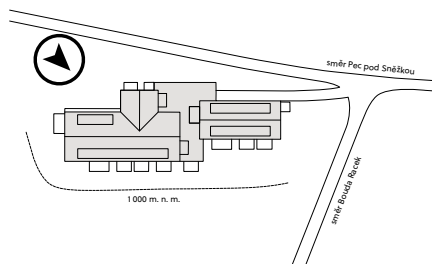


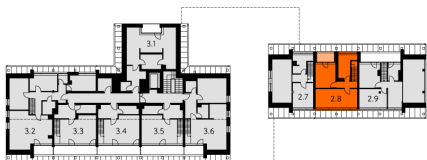
Situation



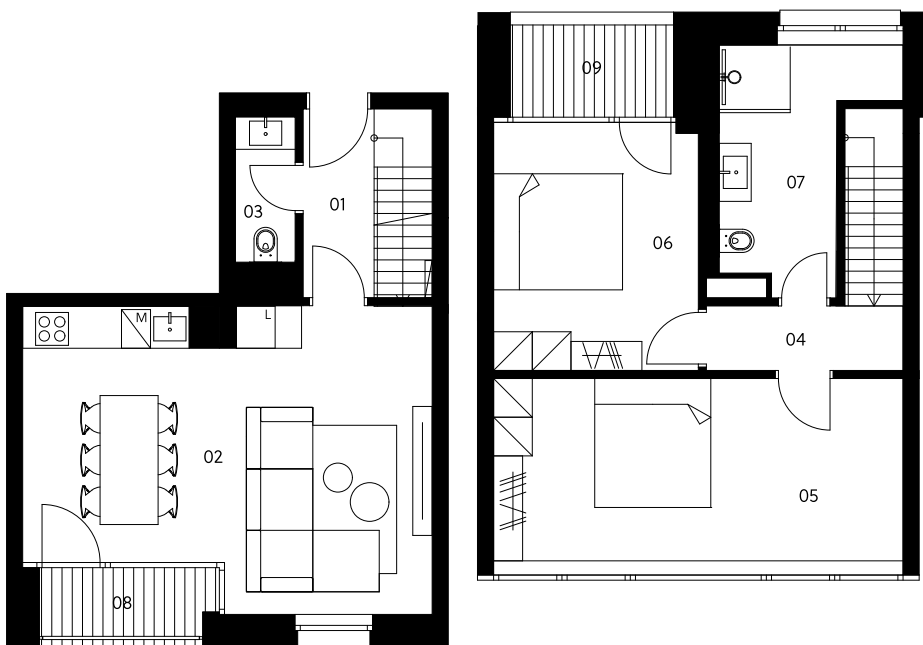
2. NP



3. NP



2.8



Zahrádky 1000

Apartment 2.8

1st floor | 3 rooms | 81.5 m²

01	Entrance hall	6.2 m ²
02	Living room with kitchen	27.4 m ²
03	Lavatory	2.1 m ²
04	Corridor	3.1 m ²
05	Bedroom	18.0 m ²
06	Bedroom	12.2 m ²
07	Bathroom	7.7 m ²

Total usable area 76.7 m²

Total floor area 81.5 m²

08	Loggia	3.3 m ²
09	Loggia	3.6 m ²

Exterior in total 6.9 m²

crescon

crescon.cz

The orange elements in the unit floor plan are not part of the offer. The floor area, according to Government Regulation No. 366/2013 Coll., is the floor area bounded by the inner sides of the perimeter walls, including the floor area of all vertical load-bearing and non-load-bearing structures inside the unit.