

# Na Desítce

## Apartment B2.2

1st floor | 4 rooms | 110.4 m<sup>2</sup>

01	Entrance hall	4.8 m <sup>2</sup>
02	Living room with kitchen	49.1 m <sup>2</sup>
03	Corridor	2.0 m <sup>2</sup>
04	Bedroom	9.9 m <sup>2</sup>
05	Bathroom	3.8 m <sup>2</sup>
06	Bedroom	10.0 m <sup>2</sup>
07	Bedroom	18.6 m <sup>2</sup>
08	Bathroom	3.5 m <sup>2</sup>
<b>Total usable area</b>		<b>101.7 m<sup>2</sup></b>
<b>Total floor area</b>		<b>110.4 m<sup>2</sup></b>
09	Loggia	6.0 m <sup>2</sup>
10	Loggia	1.9 m <sup>2</sup>
<b>Exterior in total</b>		<b>7.9 m<sup>2</sup></b>

Included in the apartment price is 1 outdoor parking space.

Included in the apartment price is 1 cellar cubicle.

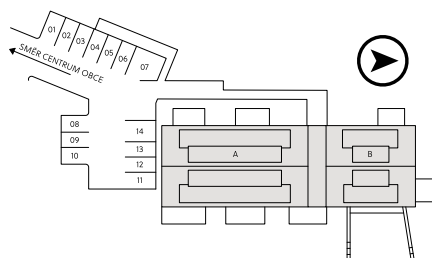
Energy label C

crescon

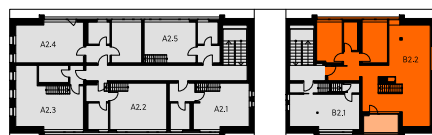
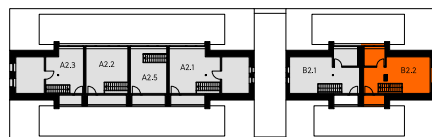
crescon.cz

The orange elements in the unit floor plan are not part of the offer. The floor area, according to Government Regulation No. 366/2013 Coll., is the floor area bounded by the inner sides of the perimeter walls, including the floor area of all vertical load-bearing and non-load-bearing structures inside the unit.

Situation



3. NP



B2.2

