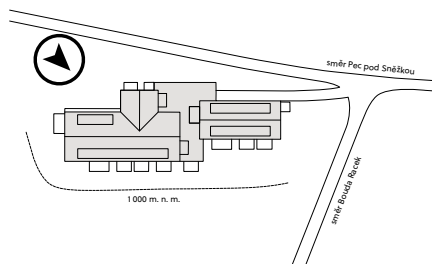
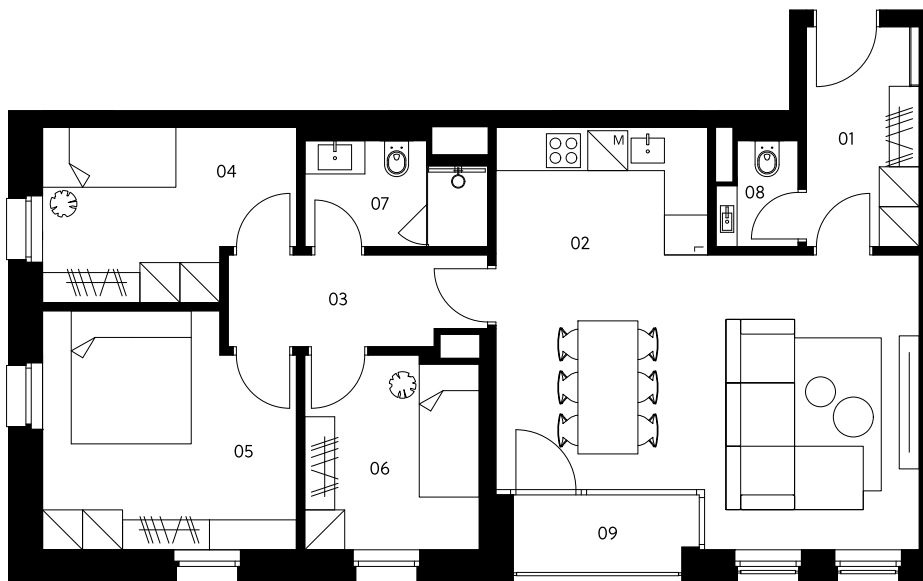


## Situation



2.3



# Zahrádky 1000

## Apartment 2.3

1st floor | 4 rooms | 83.0 m<sup>2</sup>

01	Entrance hall	5.6 m <sup>2</sup>
02	Living room with kitchen	31.4 m <sup>2</sup>
03	Corridor	5.2 m <sup>2</sup>
04	Bedroom	9.1 m <sup>2</sup>
05	Bedroom	12.9 m <sup>2</sup>
06	Bedroom	7.6 m <sup>2</sup>
07	Bathroom	4.0 m <sup>2</sup>
08	Lavatory	1.7 m <sup>2</sup>

**Total usable area** 77.5 m<sup>2</sup>

**Total floor area** 83.0 m<sup>2</sup>

09 Loggia 3.6 m<sup>2</sup>

**Exterior in total** 3.6 m<sup>2</sup>

Included in the apartment price is 1 cellar cubicle.

crescon

crescon.cz

The orange elements in the unit floor plan are not part of the offer. The floor area, according to Government Regulation No. 366/2013 Coll., is the floor area bounded by the inner sides of the perimeter walls, including the floor area of all vertical load-bearing and non-load-bearing structures inside the unit.