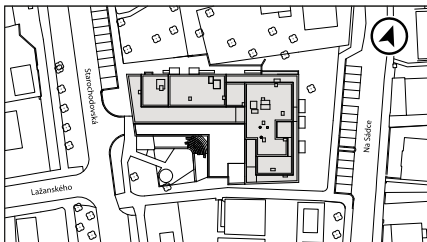
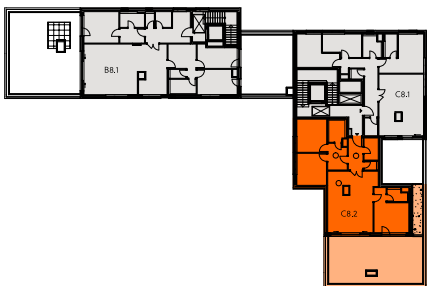


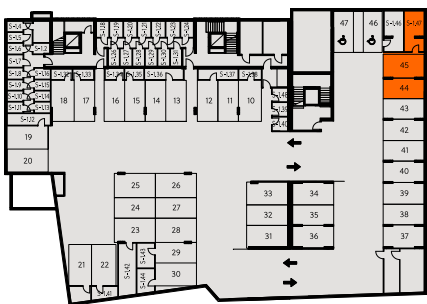
Situation



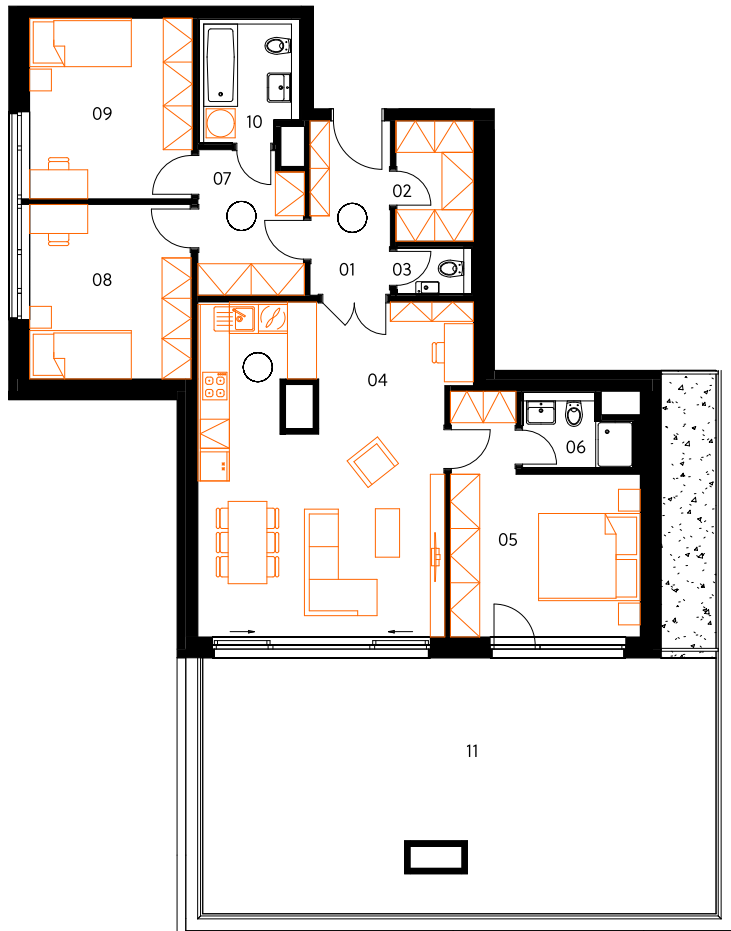
floor position



garage and cellar



C8.2



# Starochodovská

## Apartment C8.2

7th floor | 4 rooms | 108.4 m<sup>2</sup>

01	Entrance hall	6.0 m <sup>2</sup>
02	Cloakroom	4.0 m <sup>2</sup>
03	Lavatory	1.5 m <sup>2</sup>
04	Living room with kitchen	36.2 m <sup>2</sup>
05	Bedroom	16.0 m <sup>2</sup>
06	Bathroom	3.1 m <sup>2</sup>
07	Corridor	6.3 m <sup>2</sup>
08	Bedroom	12.0 m <sup>2</sup>
09	Bedroom	12.5 m <sup>2</sup>
10	Bathroom	5.1 m <sup>2</sup>
<b>Total usable area</b>		<b>102.7 m<sup>2</sup></b>
<b>Total floor area</b>		<b>108.4 m<sup>2</sup></b>
11	Terrace	55.2 m <sup>2</sup>
<b>Exterior in total</b>		<b>55.2 m<sup>2</sup></b>

Included in the apartment price jsou 2 garage spaces.

Included in the apartment price is 1 cellar cubicle.

Energy label B

crescon  
crescon.cz

The orange elements in the unit floor plan are not part of the offer. The floor area, according to Government Regulation No. 366/2013 Coll., is the floor area bounded by the inner sides of the perimeter walls, including the floor area of all vertical load-bearing and non-load-bearing structures inside the unit.