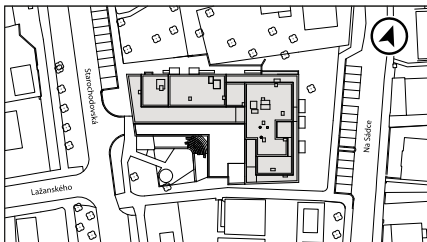


Situation



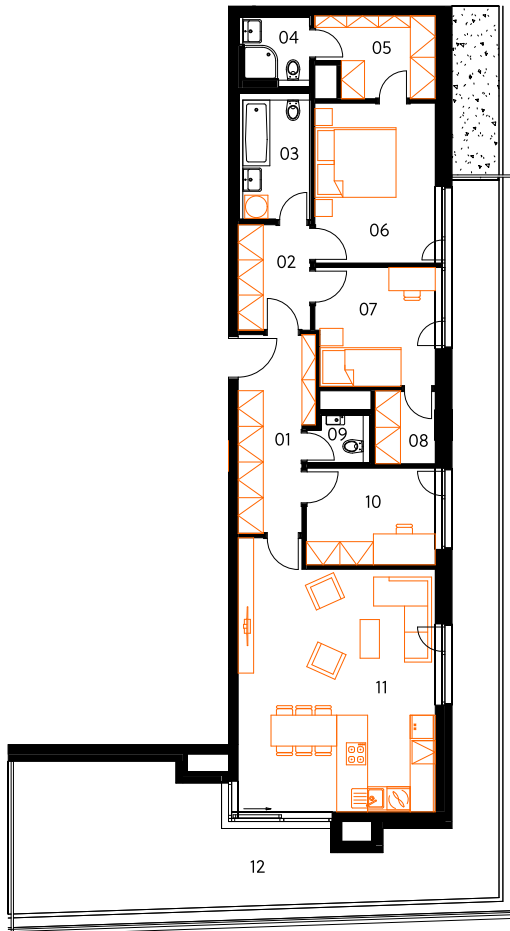
floor position



garage and cellar



C7.2



# Starochodovská

## Apartment C7.2

6th floor | 4 rooms | 106.9 m<sup>2</sup>

01	Entrance hall	9.3 m <sup>2</sup>
02	Cloakroom	5.1 m <sup>2</sup>
03	Bathroom	6.0 m <sup>2</sup>
04	Bathroom	3.0 m <sup>2</sup>
05	Cloakroom	6.0 m <sup>2</sup>
06	Bedroom	13.2 m <sup>2</sup>
07	Bedroom	9.8 m <sup>2</sup>
08	Cloakroom	2.9 m <sup>2</sup>
09	Lavatory	1.9 m <sup>2</sup>
10	Bedroom	8.7 m <sup>2</sup>
11	Living room with kitchen	34.3 m <sup>2</sup>
<b>Total usable area</b>		<b>100.2 m<sup>2</sup></b>
<b>Total floor area</b>		<b>106.9 m<sup>2</sup></b>
12	Terrace	54.0 m <sup>2</sup>
<b>Exterior in total</b>		<b>54.0 m<sup>2</sup></b>

Included in the apartment price jsou 2 garage spaces.

Included in the apartment price is 1 cellar cubicle.

Energy label B

crescon  
crescon.cz

The orange elements in the unit floor plan are not part of the offer. The floor area, according to Government Regulation No. 366/2013 Coll., is the floor area bounded by the inner sides of the perimeter walls, including the floor area of all vertical load-bearing and non-load-bearing structures inside the unit.