

# Starochodovská Residence

## Apartment C2.8

1st floor | 3 rooms | 83.2 m<sup>2</sup>

01	Entrance hall	6.6 m <sup>2</sup>
02	Corridor	6.6 m <sup>2</sup>
03	Corridor	2.9 m <sup>2</sup>
04	Living room with kitchen	27.7 m <sup>2</sup>
05	Bedroom	10.2 m <sup>2</sup>
06	Bedroom	12.6 m <sup>2</sup>
07	Cloakroom	4.8 m <sup>2</sup>
08	Bathroom	4.8 m <sup>2</sup>
09	Lavatory	1.4 m <sup>2</sup>
<b>Total usable area</b>		<b>77.6 m<sup>2</sup></b>
<b>Total floor area</b>		<b>83.2 m<sup>2</sup></b>
10	Terrace	18.3 m <sup>2</sup>
11	Front garden	19.9 m <sup>2</sup>
<b>Exterior in total</b>		<b>38.3 m<sup>2</sup></b>

Included in the apartment price is 1 garage space.

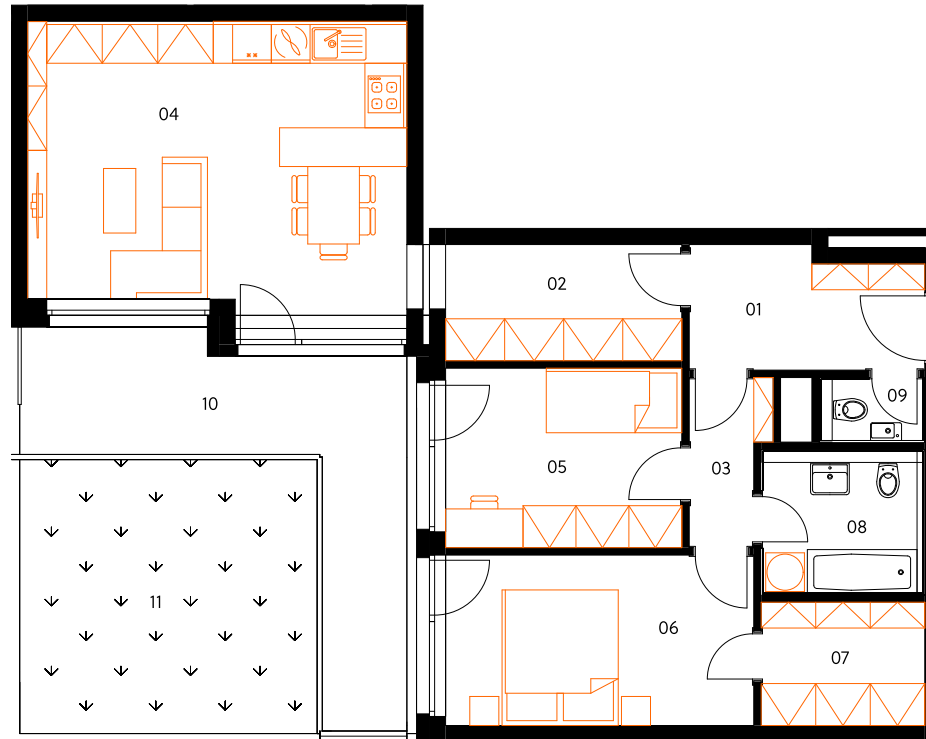
Included in the apartment price is 1 cellar cubicle.

Energy label B

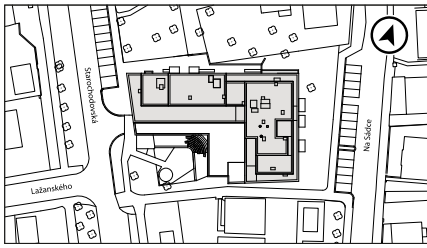
The orange elements in the unit floor plan are not part of the offer. The floor area, according to Government Regulation No. 366/2013 Coll., is the floor area bounded by the inner sides of the perimeter walls, including the floor area of all vertical load-bearing and non-load-bearing structures inside the unit.

**crescon**  
crescon.cz

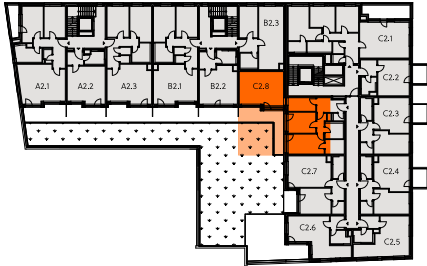
C2.8



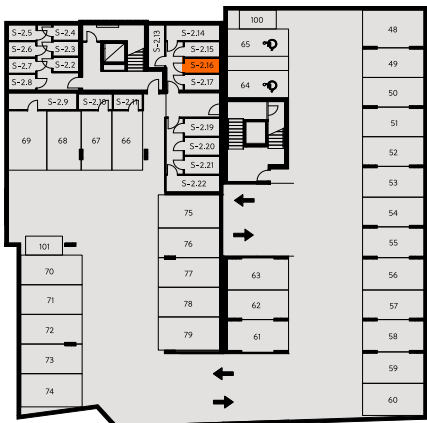
Situation



Garage



cellar



Garage

