

Starochodovská Residence

Commercial premises C1

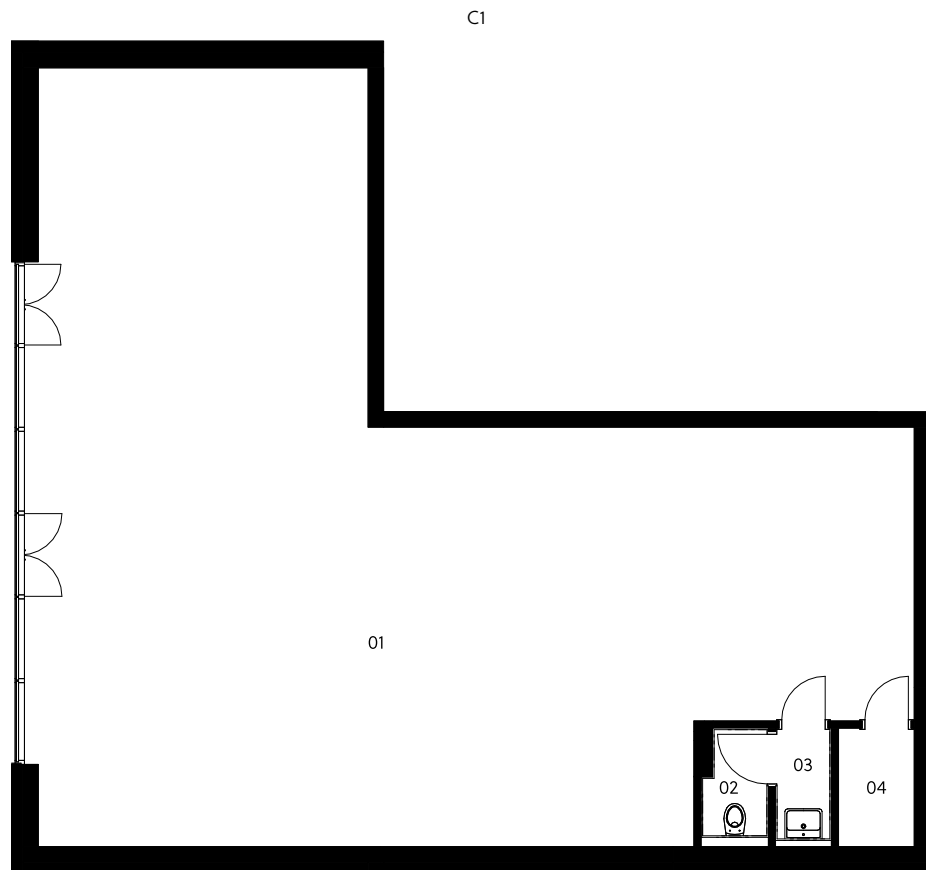
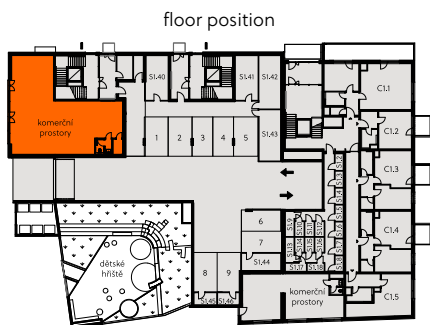
Ground floor | commercial premise |

128.0 m²

01	Commercial space	119.0 m ²
02	Lavatory	1.9 m ²
03	Utility room	1.7 m ²
04	Utility room	2.3 m ²

Total usable area 125.0 m²

Total floor area 128.0 m²



crescon

crescon.cz

The orange elements in the unit floor plan are not part of the offer. The floor area, according to Government Regulation No. 366/2013 Coll., is the floor area bounded by the inner sides of the perimeter walls, including the floor area of all vertical load-bearing and non-load-bearing structures inside the unit.