

# Starochodovská Residence

## Apartment B6.2

5th floor | 1 room | 34.8 m<sup>2</sup>

01	Entrance hall	5.0 m <sup>2</sup>
02	Bathroom	4.9 m <sup>2</sup>
03	Living room with kitchen	23.7 m <sup>2</sup>
<b>Total usable area</b>		<b>33.6 m<sup>2</sup></b>
<b>Total floor area</b>		<b>34.8 m<sup>2</sup></b>
04	Loggia	8.7 m <sup>2</sup>
<b>Exterior in total</b>		<b>8.7 m<sup>2</sup></b>

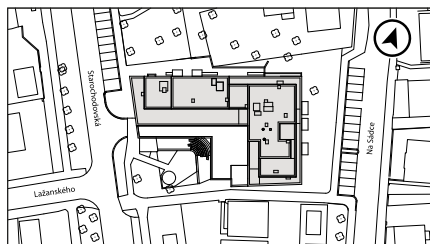
Included in the apartment price is 1 cellar cubicle.

Energy label B

crescon

crescon.cz

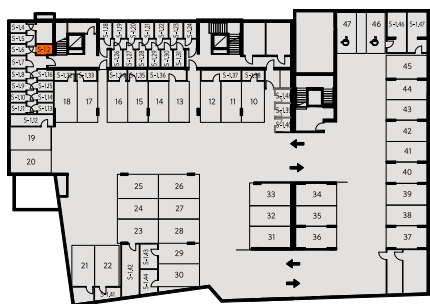
Situation



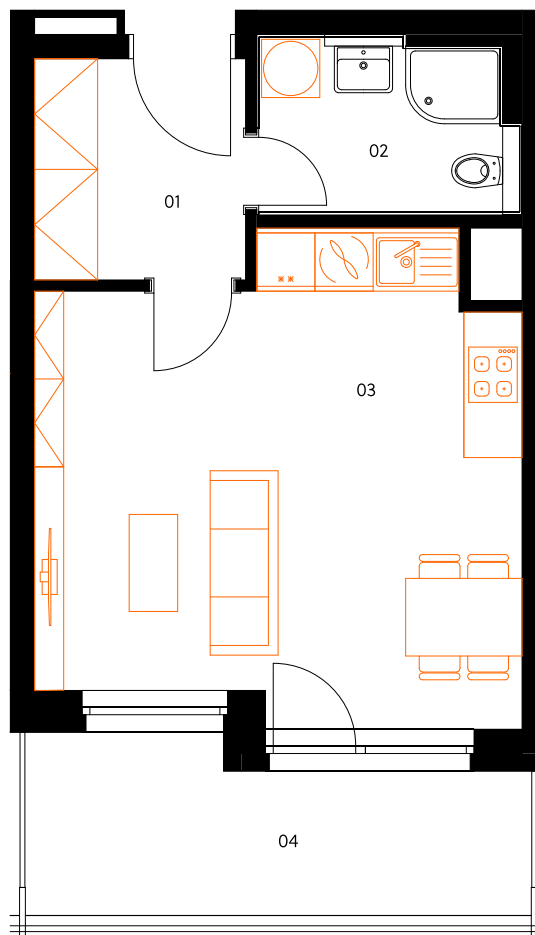
floor position



cellar



B6.2



The orange elements in the unit floor plan are not part of the offer. The floor area, according to Government Regulation No. 366/2013 Coll., is the floor area bounded by the inner sides of the perimeter walls, including the floor area of all vertical load-bearing and non-load-bearing structures inside the unit.