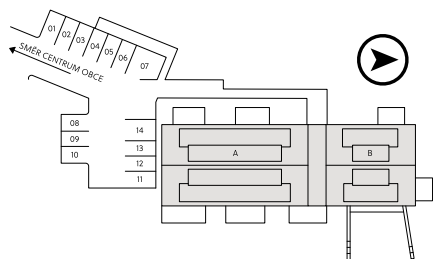
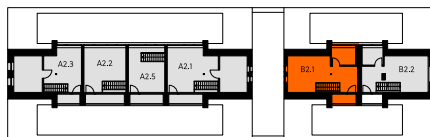


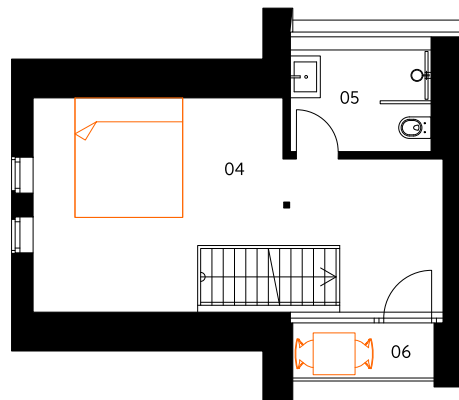
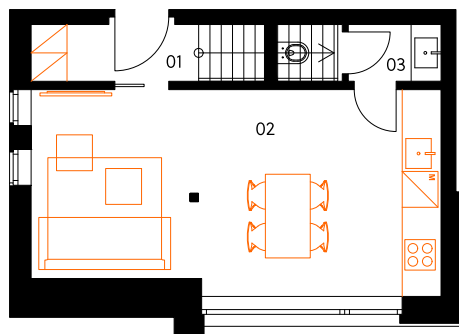
Situation



3. NP



B2.1



# Na Desítce

## Apartment B2.1

1st floor | 2 rooms | 56.9 m<sup>2</sup>

01	Entrance hall	3.8 m <sup>2</sup>
02	Living room with kitchen	22.8 m <sup>2</sup>
03	Lavatory	2.5 m <sup>2</sup>
04	Bedroom	19.5 m <sup>2</sup>
05	Bathroom	4.0 m <sup>2</sup>
<b>Total usable area</b>		<b>52.6 m<sup>2</sup></b>
<b>Total floor area</b>		<b>56.9 m<sup>2</sup></b>
06	Loggia	2.2 m <sup>2</sup>
<b>Exterior in total</b>		<b>2.2 m<sup>2</sup></b>

Included in the apartment price is 1 outdoor parking space.

Included in the apartment price is 1 cellar cubicle.

Energy label C

# crescon

crescon.cz

The orange elements in the unit floor plan are not part of the offer. The floor area, according to Government Regulation No. 366/2013 Coll., is the floor area bounded by the inner sides of the perimeter walls, including the floor area of all vertical load-bearing and non-load-bearing structures inside the unit.