

# Na Desítce

## Apartment A2.3

1st floor | 3 rooms | 66.0 m<sup>2</sup>

01	Hall	2.6 m <sup>2</sup>
02	Living room with kitchen	31.8 m <sup>2</sup>
03	Bathroom	4.9 m <sup>2</sup>
04	Bedroom	13.2 m <sup>2</sup>
05	Bedroom	10.0 m <sup>2</sup>
<b>Total usable area</b>		<b>62.5 m<sup>2</sup></b>
<b>Total floor area</b>		<b>66.0 m<sup>2</sup></b>
06	Loggia	2.1 m <sup>2</sup>
<b>Exterior in total</b>		<b>2.1 m<sup>2</sup></b>

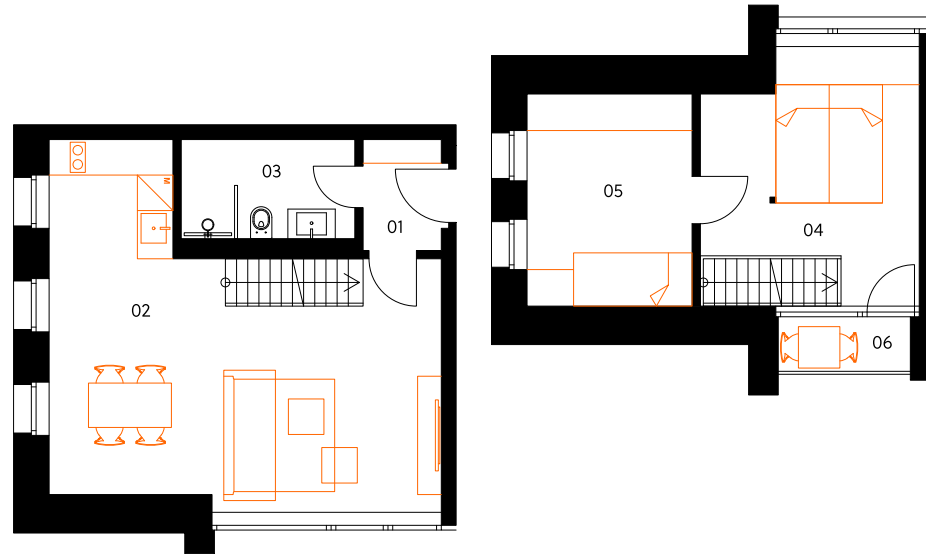
Included in the apartment price is 1 outdoor parking space.

Included in the apartment price is 1 cellar cubicle.

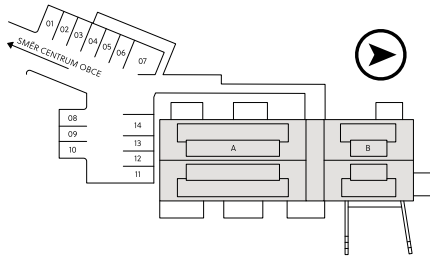
Energy label C

**crescon**  
crescon.cz

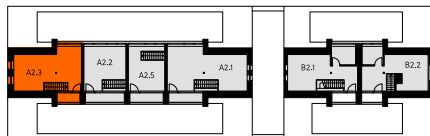
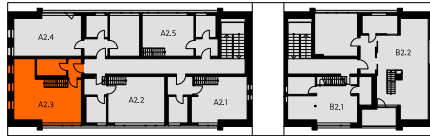
A2.3



Situation



3. NP



The orange elements in the unit floor plan are not part of the offer. The floor area, according to Government Regulation No. 366/2013 Coll., is the floor area bounded by the inner sides of the perimeter walls, including the floor area of all vertical load-bearing and non-load-bearing structures inside the unit.