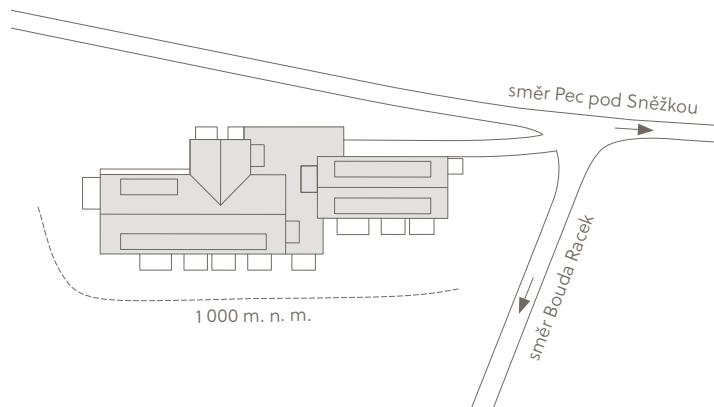
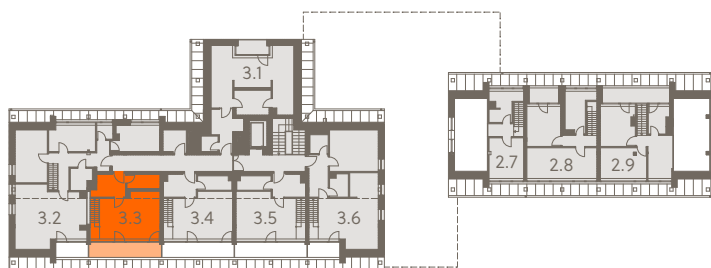


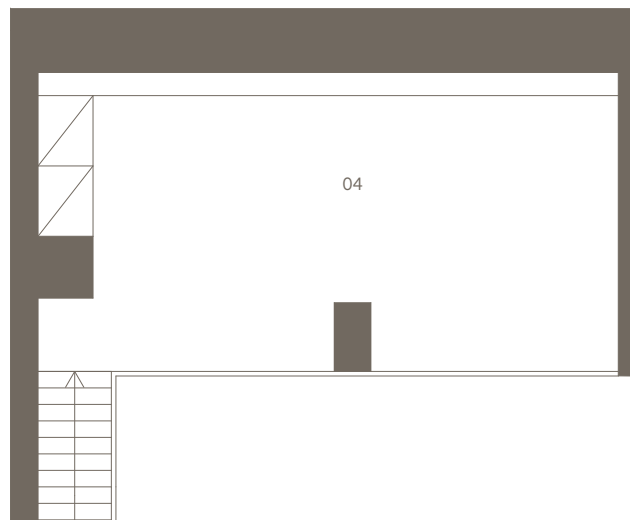
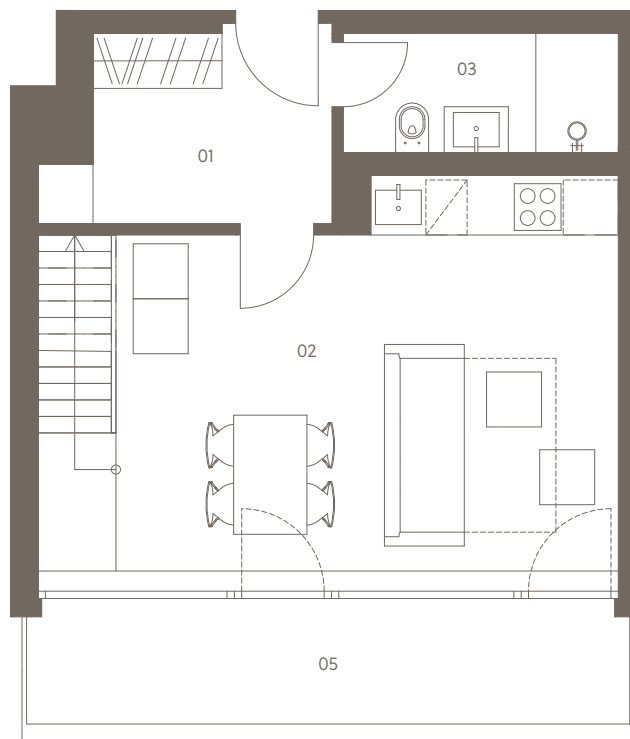
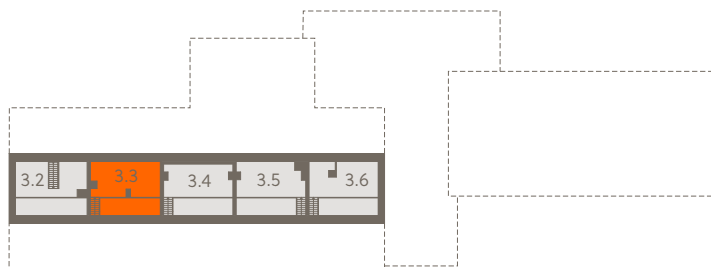
Situace | Location



3. NP | 2nd floor



Galerie | Gallery



# Zahrádky 1000

**Apartmán 3.3** 3. NP | 2+kk | 58.3 m<sup>2</sup>

Apartment 3.3 2nd floor | 2 rooms

01 Vstupní hala | Entrance hall 5.8 m<sup>2</sup>

02 Obývací pokoj + kk | Living r. + kitchen 26.4 m<sup>2</sup>

03 Koupelna | Bathroom 3.9 m<sup>2</sup>

04 Galerie | Gallery 20.0 m<sup>2</sup>

**Užitná plocha celkem** | Net floor area **56.1 m<sup>2</sup>**

**Podlahová plocha celkem** | Gross int. area\* **58.3 m<sup>2</sup>**

05 Lodžie | Loggia 7.7 m<sup>2</sup>

**Exteriér celkem** | Exterior total **7.7 m<sup>2</sup>**

**V ceně apartmánu je sklep.**

Storage room is included in the price of the apartment.

\*Podlahová plocha je vypočtena podle nařízení vlády č. 366/2013 Sb. jako půdorysná plocha ohraničená vnitřními stranami obvodových zdí bytu včetně půdorysné plochy všech svislých nosných i nenosných konstrukcí uvnitř bytu. Ne zahrnuje balkony, lodžie, terasy, předzahrádky a jiné zpevněné plochy.

\*Gross internal area is calculated in compliance with the Government decree No. 366/2013 Sb., as the plan area bounded by inside surfaces of peripheral walls, including the plan areas of all bearing and partition walls inside the apartment. It does not include balconies, loggias, terraces, front-gardens and other paved areas.

**crescon**

[www.crescon.cz](http://www.crescon.cz)